



UNIVERSITY  
FOUNDATION  
PROGRAMME  
EST. 1989

# YOUR PATHWAY TO A **TOP UK** UNIVERSITY



**DG** DAVID  
GAME  
COLLEGE

35+  
YEARS  
ESTABLISHED IN 1989



# UNIVERSITY FOUNDATION PROGRAMME

This one-year course will prepare and qualify you for admission to top UK universities. Our University Foundation Programme (UFP) is recognised as an RQF Level 3 qualification, equivalent to A-Levels or the International Baccalaureate (IB).

## TRUSTED FOR OVER 35 YEARS

Established in 1989, our course was one of the first independent foundation programmes in the world. Our experience makes us a leading foundation course provider, trusted and accepted by more than 90 UK universities.



Look out for the Russell Group logo among the universities we mention in this prospectus. The Russell Group is a group of 24 world-class, research-intensive universities, from which many of our students have received offers.



## 3 THINGS MAKE US DIFFERENT

### UNPARALLELED EXPERIENCE

Studying with us will open the door to unrivalled opportunities. We will support you to develop both personally and academically, as the unique individual that you are. You will also meet other students from all over the world and make friends for life. Most importantly, we prepare you for university, so you can make a smooth transition to the undergraduate level.

### A QUALITY EDUCATION

Over the past 35 years, thousands of our students have secured offers from top UK universities, including many from the Russell Group. You will learn from highly skilled tutors, and receive a qualification certified by our External Examiners from leading universities.

### FREEDOM TO CHOOSE

As we are independent, you will have access to over 90 universities, to apply for the subjects that interest you. Our staff are dedicated to advising you with your career and education. You will be able to choose course modules from our extensive range, relevant to what you want to study at university. We will support you to achieve your full potential and ideal progression.



# WELCOME



Thank you for your interest in the University Foundation Programme (UFP) at David Game College, London. This prospectus tells you more about the UFP and the different pathways you can choose from.

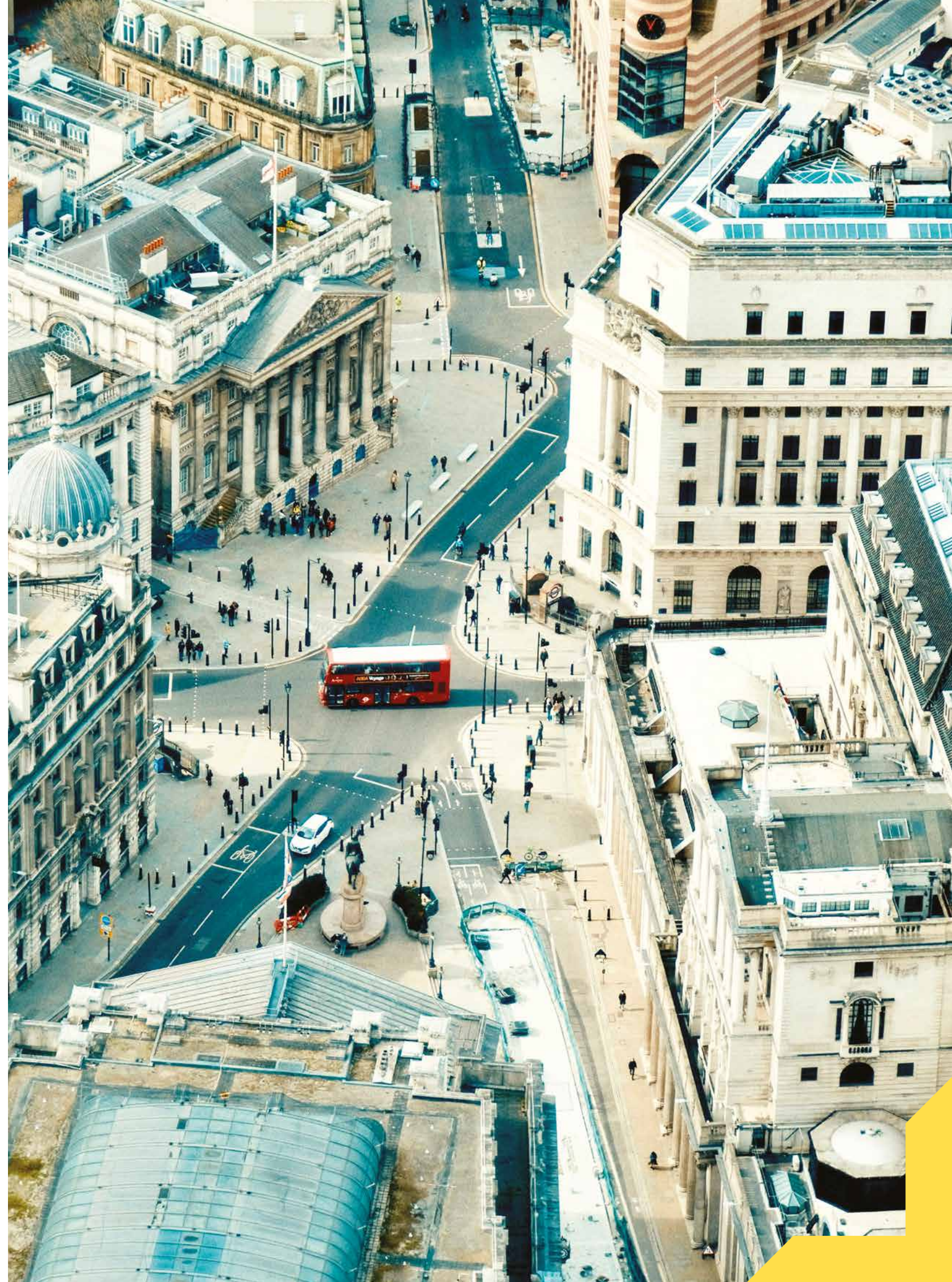
The UFP is one of the oldest independent foundation courses in the UK. Over the past 35 years, we have grown to become one of the most respected alternative routes into top UK institutions, including many Russell Group universities. What's more, because we are independent, you will not be restricted to a small number of university options. Our courses give you access to over 90 universities.

We look forward to welcoming you to the College.

Mansour Kaveh  
**UFP COURSE DIRECTOR**

I am proud that, over the last 50 years, thousands of students have benefited from our intensive tuition, securing places at top UK universities and realising their ambitions. This is what we're all about – providing the right environment for students to make choices that put them on the pathway to success. We combine traditional values with a modern approach to ensure all courses are delivered in the most effective way for examination success.

David Game  
**FOUNDER & CO-PRINCIPAL,  
DAVID GAME COLLEGE**







# THE 6 PATHWAYS

We have six pathways to choose from. Each pathway allows you access to a wide-range of specialisations in that field, so you can progress to almost any undergraduate degree in the UK.

As we are an independent provider, you will have access to hundreds of degree course options. Our qualifications are accepted at over 90 high ranking universities, including many of the Russell Group.

## 1

### **ARCHITECTURE, ART & DESIGN**

Get practical experience and build a portfolio in a range of design fields, from graphic design to fashion, fine art, product design, architecture and photography.

This one year course will prepare you for a degree at a leading creative university.

## 2

### **BUSINESS & FINANCE**

Learn fundamental skills and study subjects such as accounting, economics, maths, IT, communication and business management.

This one year course will equip you for a business or finance degree at high ranking universities.

## 3

### **ENGINEERING & COMPUTING**

Gain a strong grounding in scientific subjects and develop your knowledge in areas such as maths, computer programming and physics.

This one year course will prepare you for an engineering or computing degree at a top university.

## 4

### **SCIENCE & PHARMACY**

Learn both scientific theory and practical elements in subjects such as biology, chemistry, physics, IT and quantitative methods.

This intensive one-year course will equip you for a biosciences or pharmacy degree at a high ranking university.

## 5

### **LAW, HUMANITIES & SOCIAL SCIENCES**

Develop critical analysis, evidence gathering and evaluation skills from subjects such as law, politics, psychology, sociology and economics.

This one-year course will prepare you for law, humanities or social sciences degrees at prestigious universities.

## 6

### **MEDICINE**

Understand what it means to be a medical professional and gain a thorough grounding in biology, chemistry and the medical sciences.

This one-year intensive course will give you an excellent preparation for studying medicine at a leading university.



# ARCHITECTURE, ART & DESIGN

Create your future with the **Architecture, Art & Design** Pathway.

If you are interested in artistic and expressive subjects, this one-year pathway will prepare you for a place at a leading university in this field. On this practical course, you will learn about different types of design, gain new skills and get ready for creative success.

During the course, you will:

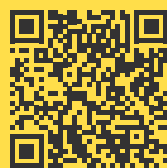
- ✓ Learn from highly qualified art and design tutors, who are in touch with London's thriving art community
- ✓ Gain practical experience in a variety of key design fields
- ✓ Benefit from our fully equipped artistic and design studios
- ✓ Develop essential creative skills and independent learning
- ✓ Identify your interests and strengths to build confidence in your work
- ✓ Build a diverse, stand-out portfolio – a must for your degree application.

All of which will guide you towards the best degree subject for you.

Every year our students receive offers from Central St Martins University of the Arts London (UAL).

## FIND OUT MORE

Scan the QR code for full details and entry requirements.



<https://ufp.uk.com/course/foundation-architecture-art-design/>

## COURSE STRUCTURE

### TERM 1

You will learn key design skills for developing your portfolio:

- Fine Art
- Graphic Design
- Photography
- Spatial Design

### TERM 2

Choose a specialism and select a Major and a Minor Module to:

- Learn about your specialism in more depth
- Complete your portfolio

### TERM 3

In the final term, you will:

- Work on an independent project related to your interest, skills and chosen subject
- Develop the independence needed to be successful at university study

"The quality of education at the UFP is exceptional. Learning from outstanding teachers with vast experience had a huge impact on my academic path. Thanks to their support, I was able to get into the university I dreamed of."

### Mahta

Accepted at UAL, Central St Martins, to study Fine Art





# TOP DESTINATION UNIVERSITIES

ARCHITECTURE, ART & DESIGN



With its many famous art galleries and museums, London is a world-renowned centre for art, design and culture.

OUR GRADUATES RECEIVE  
OFFERS FROM PRESTIGIOUS  
UNIVERSITIES, SUCH AS:

RUSSELL  
GROUP

**ual:** university  
of the arts  
london  
central  
saint martins

QS RANKING

2<sup>ND</sup>

IN THE WORLD FOR  
ART & DESIGN

**MANCHESTER**  
1824

The University of Manchester

QS RANKING

6<sup>TH</sup>

IN THE UK 2024

32<sup>ND</sup> IN THE WORLD 2024

 UNIVERSITY OF  
**BATH**

QS RANKING

22<sup>ND</sup>

IN THE UK 2024\*

148<sup>TH</sup> IN THE WORLD 2024

5+ QS STARS IN 2024

RUSSELL  
GROUP

 University  
of Glasgow

QS RANKING

12<sup>TH</sup>

IN THE UK 2024

76<sup>TH</sup> IN THE WORLD 2024





"The tutors are simply incredible. From the beginning, they helped me to understand subjects I had never studied before. They were very patient in the first few months, when I was struggling to understand things, which drove me to succeed the rest of the year."

**Roberto**  
Accepted at the University of Surrey to study Economics and Finance

# BUSINESS & FINANCE

Become a commercial success with the **Business & Finance** Pathway.

If you want to excel in commerce or lead the way in business, this one-year pathway will prepare you for a relevant degree at a top UK university. On this in-depth course, you will learn both the basic skills needed, and develop your knowledge in a specialist area.

During the course, you will:

- ✦ Delve into accounting, economics and business management
- ✦ Develop essential numeracy, communication and theoretical skills
- ✦ Gain deeper knowledge in your specialist subjects
- ✦ Build your analytical skills and learn how to gain logical insight into business data
- ✦ Develop your critical thinking skills
- ✦ Study in the City of London, the UK's leading financial district

All of which will prepare you for a range of business or finance degrees at leading UK universities.

Bayes Business School at City University London is a popular destination for our business and finance students.

## FIND OUT MORE

Scan the QR code for full details and entry requirements.

<https://ufp.uk.com/course/foundation-business-finance/>



## COURSE STRUCTURE

### TERM 1

In the first term you will complete the three compulsory Minor Modules:

- Communication Skills/IELTS
- Core Mathematics
- Information Technology

### TERMS 2 & 3

In the remaining terms, you will choose three of these Major Modules:

- Accounting
- Business Organisation
- Economics
- Further Computing
- Further Mathematics
- Quantitative Methods





# TOP DESTINATION UNIVERSITIES

## BUSINESS & FINANCE



London is a world leader in business development and global finance.

OUR GRADUATES RECEIVE OFFERS FROM PRESTIGIOUS UNIVERSITIES, SUCH AS:

RUSSELL GROUP

KING'S  
*College*  
LONDON

QS RANKING

7<sup>TH</sup>

IN THE UK 2024

40<sup>TH</sup> IN THE WORLD 2024

RUSSELL GROUP

MANCHESTER  
1824  
The University of Manchester

QS RANKING

6<sup>TH</sup>

IN THE UK 2024

32<sup>ND</sup> IN THE WORLD 2024

RUSSELL GROUP

Durham  
University

QS RANKING

13<sup>TH</sup>

IN THE UK 2024

78<sup>TH</sup> IN THE WORLD 2024

University of  
Reading

QS RANKING

26<sup>TH</sup>

IN THE UK 2024

168<sup>TH</sup> IN THE WORLD 2024





# ENGINEERING & COMPUTING

The sky is the limit with the **Engineering and Computing** Pathway.

If you want to work with cutting edge technology, construct buildings or build aeroplanes, this pathway will steer you in the right direction. Our one-year course will give you both practical and academic experience to equip you for in-demand engineering and computing degrees.

During the course, you will:

- ✓ Become university-ready for technology-based degree courses
- ✓ Build your technical, computing and analytical skills
- ✓ Gain a strong grounding in essential scientific subjects
- ✓ Identify which subject areas suit you best
- ✓ Learn from highly qualified engineering and computing tutors
- ✓ Use the latest technology in our physics and computer laboratories

All of which will prepare you for an undergraduate degree in the growing engineering and technology sector.

There has never been more demand for engineering and computing graduates.

## FIND OUT MORE

Scan the QR code for full details and entry requirements.

<https://ufp.uk.com/course/foundation-engineering-computing/>



## COURSE STRUCTURE

### TERM 1

In the first term you will complete the compulsory Minor Modules:

- Communication Skills/IELTS
- Core Mathematics
- Information Physics
- Introductory Technology

### TERMS 2 & 3

In the remaining terms, you will choose three of these Major Modules:

- Chemistry
- Further Computing
- Further Mathematics
- Physics



"The UFP's tutors are exceptional and it's been a pleasure developing my skills with them. They have also become mentors, guiding and advising me, and I appreciated their patience. I hope I meet teachers of their calibre at university."

### Hussain

Accepted by King's College London to study Artificial Intelligence







OUR GRADUATES RECEIVE  
OFFERS FROM PRESTIGIOUS  
UNIVERSITIES, SUCH AS:

RUSSELL  
GROUP

KING'S  
*College*  
LONDON

QS RANKING

7<sup>TH</sup>

IN THE UK 2024

40<sup>TH</sup> IN THE WORLD 2024

RUSSELL  
GROUP

University of  
BRISTOL

QS RANKING

9<sup>TH</sup>

IN THE UK 2024

55<sup>TH</sup> IN THE WORLD 2024

RUSSELL  
GROUP

University of  
Southampton

QS RANKING

14<sup>TH</sup>

IN THE UK 2024

81<sup>ST</sup> IN THE WORLD 2024

RUSSELL  
GROUP

University of  
Sheffield

QS RANKING

18<sup>TH</sup>

IN THE UK 2024

104<sup>TH</sup> IN THE WORLD 2024

# TOP DESTINATION UNIVERSITIES

ENGINEERING & COMPUTING



Renowned for its tech  
start-ups and engineering  
landmarks, London offers  
unmatched opportunities in  
engineering and computing.



"The UFP aligned perfectly with my academic goals and interests. The strong emphasis on both academic and personal development prepared me for university life. The dedicated support and nurturing environment boosted my confidence and I believe the programme was the best start for my university journey."

### Samira

Accepted by Queen Mary University of London to study International Relations



# LAW, HUMANITIES & SOCIAL SCIENCE

Lead the way with the **Law, Humanities and Social Sciences** Pathway.

For those who want to learn more about society, the British legal system or media and politics, this pathway will give you the best start. The one-year pathway is an intensive course, designed to develop key skills and prepare you for sought-after degrees in the sector.

During the course, you will:

- ✓ Build your critical thinking, debating and higher communication skills
- ✓ Deepen your analytical, research and essay writing skills
- ✓ Develop an understanding of human behaviour and an appreciation for a multicultural society
- ✓ Gain an understanding of the world-renowned British judicial system, which is the basis of many court and legal systems around the world
- ✓ Benefit from studying in London, home of the Old Bailey and the Inns of Court for centuries
- ✓ Learn from highly educated tutors who are specialists in their field.

All of which will help you decide your preferred path for onward undergraduate study in law, humanities or social sciences subjects.

The British legal system has evolved over more than 1,000 years and is widely regarded as one of the best and most independent in the world.

## COURSE STRUCTURE

### TERM 1

In the first term you will complete the compulsory Minor Modules:

- Communication Skills/IELTS
- Intermediate Mathematics
- Information Technology

### TERMS 2 & 3

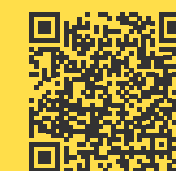
In the remaining terms, you will choose three of these Major Modules:

- Economics
- Law
- Politics
- Psychology
- Sociology

## FIND OUT MORE

Scan the QR code for full details and entry requirements.

<https://ufp.uk.com/course/foundation-law-humanities-social-sciences/>





# TOP DESTINATION UNIVERSITIES

LAW, HUMANITIES & SOCIAL SCIENCES



Many legal systems around the world are based on the English Common Law legal system.



OUR GRADUATES RECEIVE OFFERS FROM PRESTIGIOUS UNIVERSITIES, SUCH AS:

RUSSELL GROUP



QS RANKING

13<sup>TH</sup>

IN THE UK 2024

78<sup>TH</sup> IN THE WORLD 2024



QS RANKING

9<sup>TH</sup>

IN THE UK 2024

145<sup>TH</sup> IN THE WORLD 2024

RUSSELL GROUP



QS RANKING

7<sup>TH</sup>

IN THE UK 2024

40<sup>TH</sup> IN THE WORLD 2024

RUSSELL GROUP



The University of Manchester

QS RANKING

6<sup>TH</sup>

IN THE UK 2024

32<sup>ND</sup> IN THE WORLD 2024

RUSSELL GROUP



# SCIENCE & PHARMACY

Help shape the future with the **Science & Pharmacy Pathway**.

If you are interested in pharmacy or biomedical sciences, this course will set you on the right path for a rewarding career, helping shape everyday lives in the sciences. An intensive, one-year pathway, the course covers both theory and practical elements.

During the course, you will:

- ✓ Develop a deeper understanding of the core sciences (Chemistry and Biology) needed to progress to leading universities
- ✓ Gain fundamental scientific and hypothesis testing skills
- ✓ Learn about the latest developments in scientific theory that will affect our future
- ✓ Learn from highly skilled science and mathematics tutors, passionate about their subjects
- ✓ Study theory and practice in our custom-built university-grade laboratories

All of which will help steer you towards the degree subject you are most suited to in this exciting, pioneering sector.

The UK is home to world-leading scientific research and development institutions.

## FIND OUT MORE

Scan the QR code for full details and entry requirements.



<https://ufp.uk.com/course/science-pharmacy-foundation-year/>

## COURSE STRUCTURE

### TERM 1

In the first term you will complete the compulsory Minor Modules:

- Communication Skills/IELTS
- Core Mathematics
- Introductory Biology
- Introductory Chemistry
- Information Technology

### TERMS 2 & 3

In the remaining terms, you will choose three of these Major Modules:

- Biology
- Chemistry
- Further Mathematics
- Physics
- Quantitative Methods



"I chose the UFP because of its intensive one-year pathway. The continual assessment made study more manageable and helped me stay focused. I was pleased that the college celebrates diversity and provides halal food. My tutors listened and were encouraging and supportive with my UCAS application. I knew I was in safe hands."

**Nyna**

Accepted by King's College London to study Pharmacy





Our successful alumni have since gone on to graduate from UCL and Southampton.

OUR GRADUATES RECEIVE OFFERS FROM PRESTIGIOUS UNIVERSITIES, SUCH AS:

RUSSELL GROUP

RUSSELL GROUP



QS RANKING

6<sup>TH</sup>

IN THE UK 2024

32<sup>ND</sup> IN THE WORLD 2024



QS RANKING

7<sup>TH</sup>

IN THE UK 2024

40<sup>TH</sup> IN THE WORLD 2024



QS RANKING

22<sup>ND</sup>

IN THE UK 2024

148<sup>TH</sup> IN THE WORLD 2024



QS RANKING

26<sup>TH</sup>

IN THE UK 2024

168<sup>TH</sup> IN THE WORLD 2024

# TOP DESTINATION UNIVERSITIES

SCIENCE & PHARMACY



London's leading research hospitals and biotech firms make it a hub for science and pharmacy innovation.





"My tutors were genuinely dedicated and provided me with personalised support and a positive learning environment, making my experience enriching and enjoyable. They never failed to do their best to help me."

**Maryam**  
Accepted by St George's University Grenada to study Medicine

# MEDICINE

Prepare for medical school with the **Medicine Pathway**.

For those aspiring to a career in medicine, our intensive, one-year Medicine Pathway is ideal preparation for gaining a place at selected medical schools.

During the course, you will:

- ✓ Cover the essentials of biology, chemistry and mathematics
- ✓ Develop strong study skills and effective communication techniques
- ✓ Gain an understanding of medical ethics and what being a medical professional entails
- ✓ Get valuable insight into the latest technological advances in medicine
- ✓ Learn about specialist areas including anatomy, pathology, genetics and pharmacology
- ✓ Prepare for university entrance interviews from day one.

All of which will help you get ready for your medical studies and refine which university course you take.

The Medicine Pathway is for you if you:

- Have a strong background in mathematics and the sciences from secondary school
- Are hardworking, highly organised, and have a strong work ethic
- Have excellent interpersonal skills and a keen interest in helping others
- Are committed to a long-term career in medicine.

## FIND OUT MORE

Scan the QR code for full details and entry requirements.

<https://ufp.uk.com/course/foundation-programme-medicine/>



## COURSE STRUCTURE

### TERM 1

In the first term you will complete six compulsory Minor Modules:

- Communication Skills/IELTS
- Core Mathematics
- Introduction to Medical Ethics and Interview Preparation
- Introductory Biology
- Introductory Chemistry
- Information Technology

### TERMS 2 & 3

In the remaining terms, you will study these Major Modules:

- Chemistry
- Biology
- Medical Sciences

Plus one of these:

- Further Mathematics
- Psychology
- Physics
- Quantitative Methods



# MEDICINE DESTINATIONS

Study medicine at one of the UFP's partner universities.

As a **Medicine Pathway** student, you will be eligible to apply directly to one or more of our six partner universities for your medical studies.

All of our partner institutions are well-respected medical schools, offering state-of-the-art laboratories and training facilities in the UK and at campuses around the globe. You do not need to go through UCAS to apply. We will support you with direct applications to your chosen universities during your time with us.

## NEW LICENSING REQUIREMENTS

From the 2024/2025 academic year, to practise medicine in the UK you will have to pass the UK MLA (Medical Licensing Assessment), regardless of whether you are an international or a UK medical student and where you have studied your Bachelor's degree.

The UK MLA replaces the PLAB and is the new standard test of core knowledge, skills and personal qualities needed to practise medicine safely in the UK.

## OUR GRADUATES RECEIVE OFFERS FROM THESE PRESTIGIOUS UNIVERSITIES:







# YOUR JOURNEY TO UNIVERSITY STARTS WITH **UFP**

Applying to university in the UK takes time. We help to smooth the process for you. From day one, we prepare and guide you to submit the best possible application.

## Support includes:

- Personal statement workshops
- University information, advice and guidance
- Ongoing, personalised application support
- Guidance on which universities to apply to, with freedom of choice.

## UNIVERSITY PROGRESSION

Most university applications are made through the Universities and Colleges Admissions Service (UCAS). It can be a complex process but we have a dedicated team on hand to help you throughout the year, all part of the UFP service.



### INTAKE 1

September	Begin UFP & start your university application
November	Complete your university application
December	Your application is sent to your chosen universities
January - April	Receive replies from universities
June	Confirm your firm and insurance offer
July	Finish your course and receive your final certificate
August	Finalise your place and prepare to start university
September	Start your undergraduate degree at university!

### INTAKE 2

January
February
March
April - May
June
July - August
September

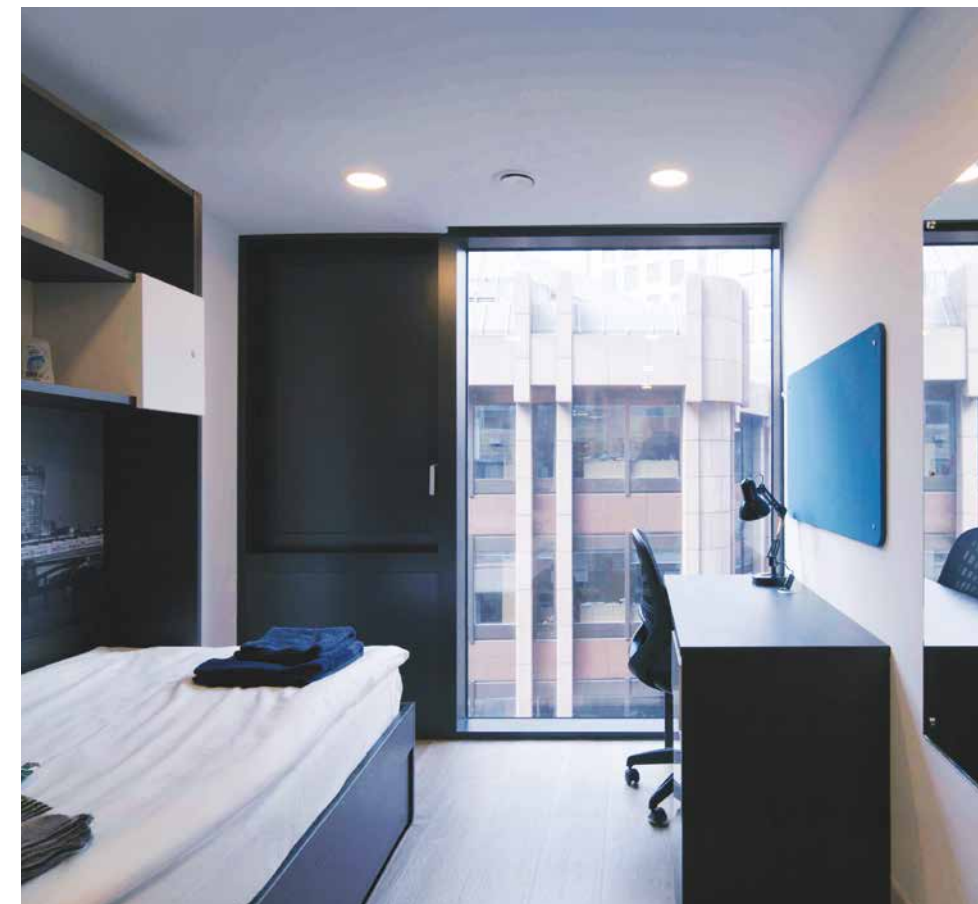


# LIFE AS A STUDENT

Being a student is about more than just the course - it's a life experience too!

We encourage you to have an active and varied social life, to help keep you happy and motivated. London is full of cultural sites and attractions, and you will find many things to do here.

The College also organises social programmes throughout the year. Activities include football and chess tournaments, other sports activities, and various societies and clubs. There are trips as well as social events and activities related to your area of study.



## ACCOMMODATION & FACILITIES

Living and studying in London is an exciting prospect!

The College has a range of accommodation options, including our Boarding House and several self-catering properties. All our accommodation is centrally located and easily accessible.

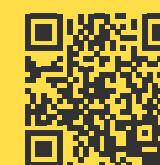
Our Boarding House accommodation is exclusively for under-18s and includes all meals and a varied calendar of social events and activities. If you are over 18, you can choose from rooms in our self-catering properties, where you will begin learning to live independently in preparation for university. All our properties have live-in staff.

You do not have to stay in College accommodation if you would prefer to make your own arrangements or already have a home in London.

### FIND OUT MORE

For more information on our accommodation and facilities, please visit:

<https://ufp.uk.com/students-life/>



3 UNIVERSITY GRADE LABORATORIES



CANTEEN AND COFFEE BAR



TWO DANCE STUDIOS



ON SITE GYM



TOP CLASS ARCHITECTURAL STUDIO



PHOTOGRAPHY STUDIO & DARKROOM



COMPUTER SUITE & RECORDING STUDIO



LIBRARY & STUDY AREAS



STUDYING WITH US

COURSE TERM DATES

The UFP has been delivering academic excellence for the past 35 years. Here’s what you can expect when you study with us.

Your intake will depend on when you finish your secondary school studies. Both intakes allow you time to apply to university and start your degree the following September.

Usually, the course takes three terms to complete. You may be offered an Extended UFP over four terms, if you require additional English language support.

YOU CAN START YOUR COURSE EITHER IN SEPTEMBER (INTAKE 1) OR JANUARY (INTAKE 2).

	SEP-DEC	JAN-MAR	APR-JUN	JUN-AUG	SEPTEMBER
INTAKE 1	TERM 1	TERM 2	TERM 3		START UNIVERSITY
INTAKE 2		TERM 1	TERM 2	TERM 3	
EXTENDED UFP*	TERM 1	TERM 2	TERM 3	TERM 4	

\* Students with an IELTS of between 4.0 and 5.0 can take an Additional Term of English Language classes before the main course.



STUDENT SUPPORT

You can speak to any staff member for advice or to express concerns or opinions. You will also be assigned a Personal Tutor when you arrive.

We will support you through every stage of the course, including helping you choose the best university degree. We will guide you with your university application (see pages 32-33). We will also keep your parents informed about your progress and well-being.

IN THE CLASSROOM

Our courses typically involve 18-25 hours a week in the classroom. We expect you to do 10-15 hours of private study on top of this to achieve your best.

You will get individual attention from your course tutors throughout the academic year. You must attend classes regularly to meet our high academic standards and achieve the best results.

CURRICULUM & ASSESSMENT



We have designed the curriculum for each pathway in consultation with our top university partners, to give you the best preparation for your undergraduate degree studies. The syllabus is reviewed twice a year, to make sure it remains relevant and up-to-date.

Your progress will be assessed regularly throughout the year. Continuous and small-scale assessment removes the pressure of having to sit for end-of-year examinations. It is also proven to give you a better chance of being offered a place at a top-ranking university.

ACCREDITATIONS

The UFP is recognised as an RQF Level 3 qualification, equivalent to A-Levels or the International Baccalaureate.

OTHER ACCREDITATIONS:



EXTERNAL EXAMINERS:

The UFP is unique in having its courses accredited by External Examiners from respected UK universities:

- 1. Prof. Michael Munday, School of Pharmacy, University College London (UCL)
- 2. Dr. John Hunter, School of Social Science, Brunel University London
- 3. Prof. Anna Barney, School of Engineering, University of Southampton
- 4. Sarah Gale, The City Law School, City, University of London



## APPLYING TO US

# ENTRY REQUIREMENTS

To be eligible for our courses, you must have passed your GCSEs or an equivalent secondary school qualification.

Please see the list of qualifications we can accept here: <https://ufp.uk.com/entry-requirements/>



ENTRY  
REQUIREMENTS

The subjects and grades you need will depend on your chosen pathway and what you would like to study at university.

If you need a visa to study in the UK and you do not already have Leave to Remain, you will need an approved Secure English Language Test (SELT), such as the Academic IELTS for UKVI.

If you have any questions about your eligibility or our entry requirements, please contact the Admissions Team at <https://ufp.uk.com/contact/>



CONTACT

# HOW TO APPLY

Follow these simple steps for applying:

Fill in our application form at <https://ufp.uk.com/apply/> or scan the QR code.

Send us a copy of the following, either by email or as part of your online application:

- Your passport or other official ID
- Final secondary school results, predicted grades or latest transcript

**WE WILL REVIEW YOUR APPLICATION AND BE IN TOUCH.**



APPLY







UNIVERSITY  
FOUNDATION  
PROGRAMME  
EST. 1989

---

David Game College  
31 Jewry Street  
London EC3N 2ET  
United Kingdom

T +44 (0)20 7727 7774  
E [info@ufp.uk.com](mailto:info@ufp.uk.com)

**[WWW.UFP.UK.COM](http://WWW.UFP.UK.COM)**

